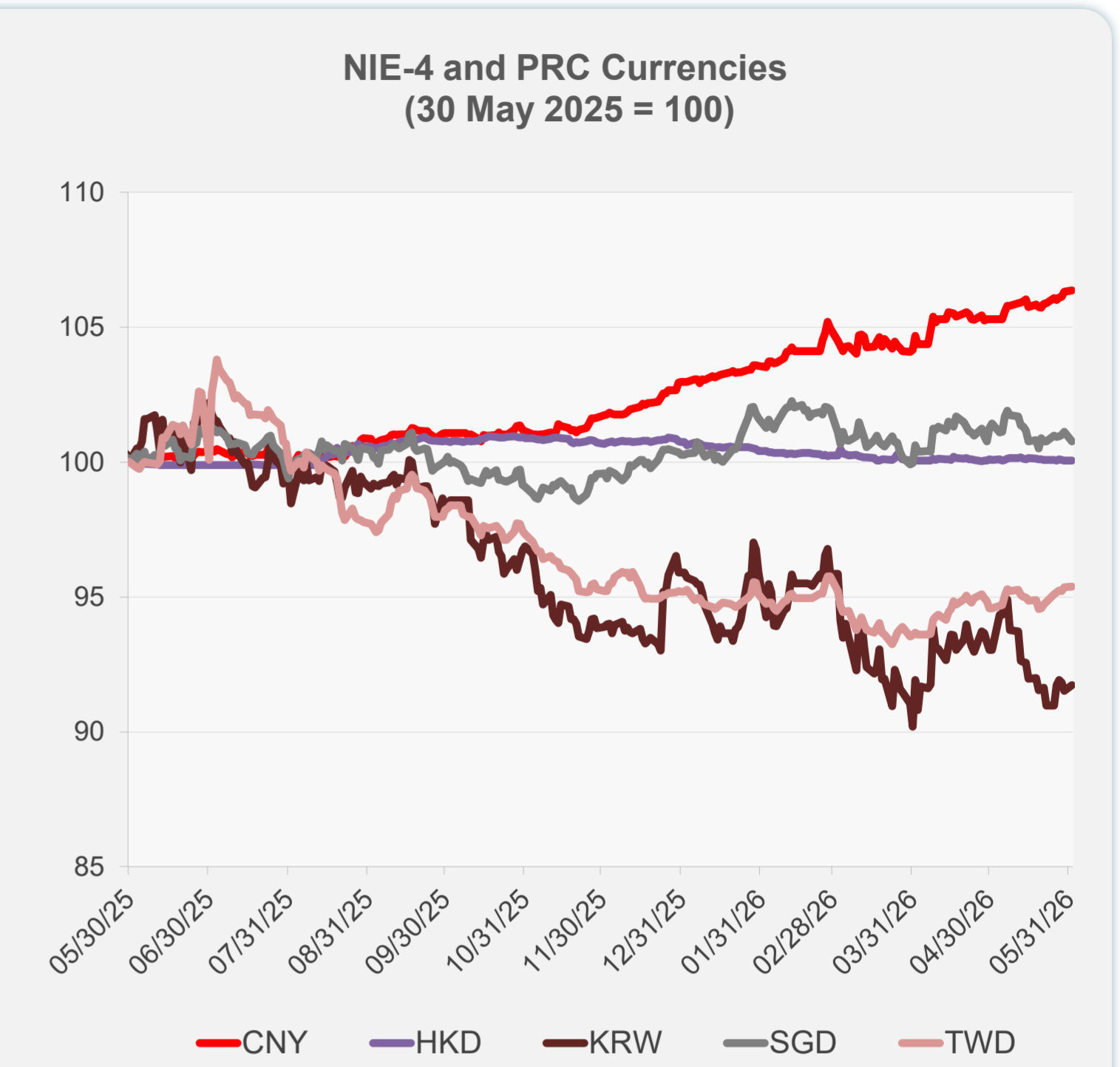
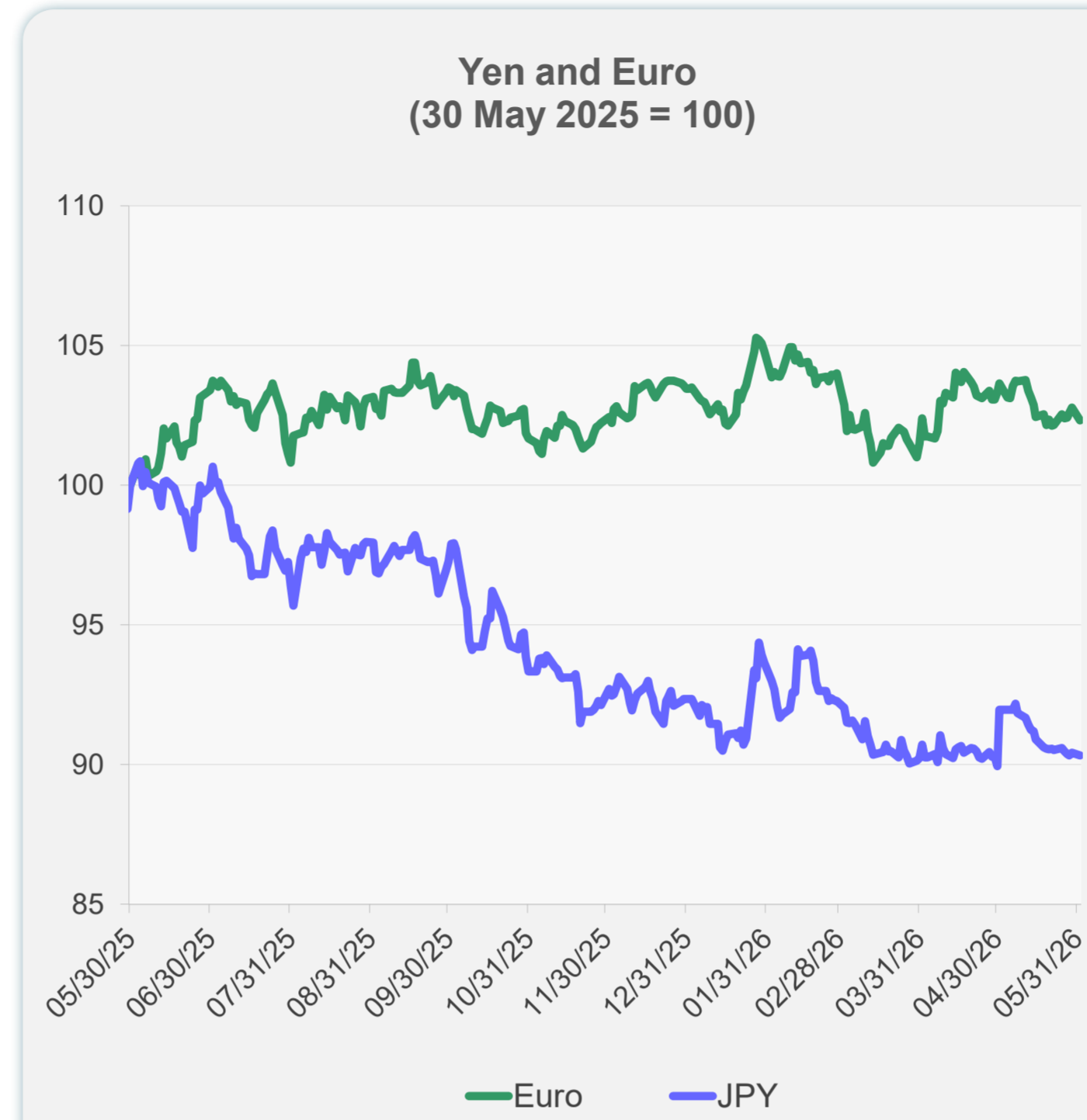
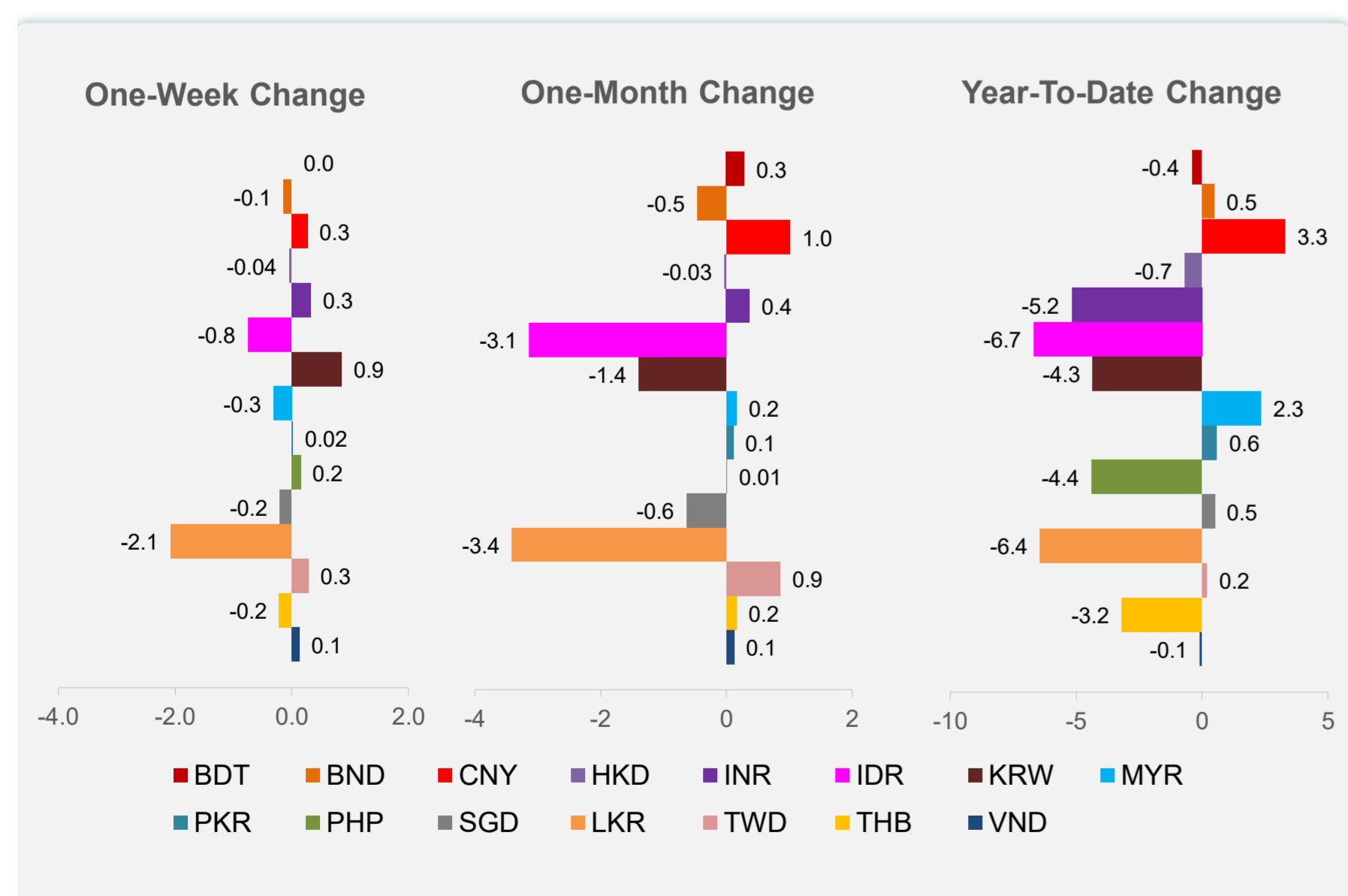
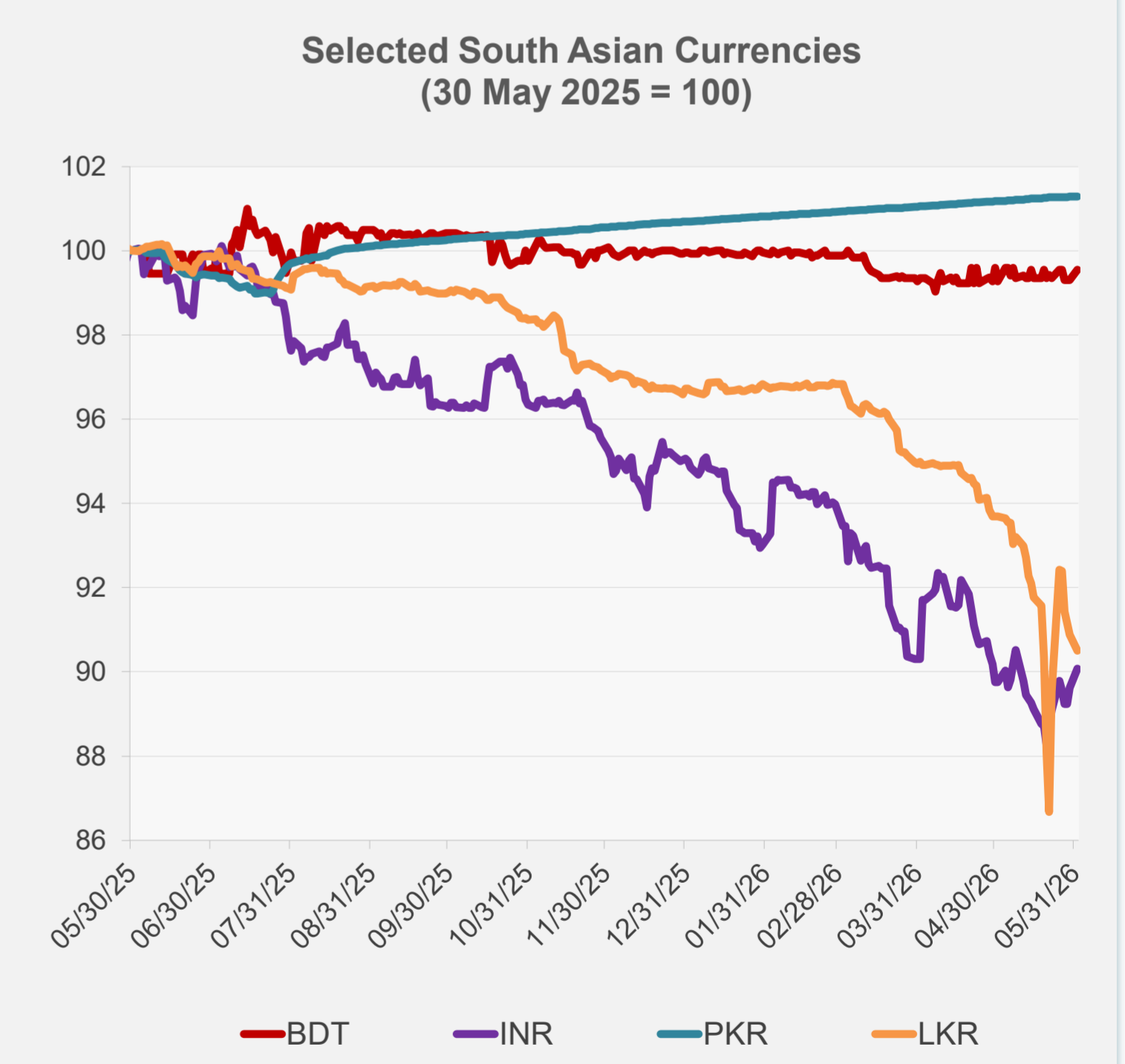
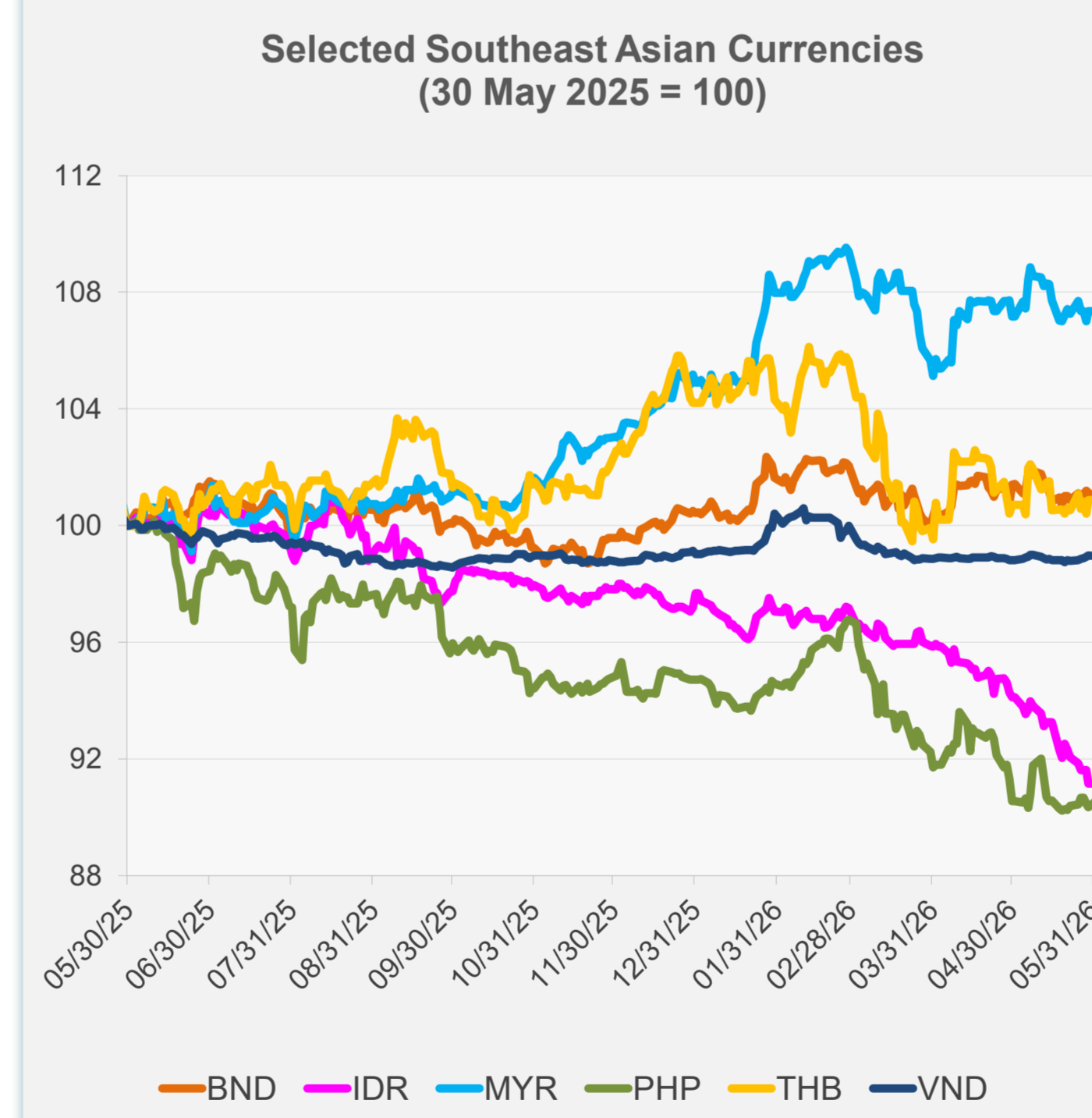


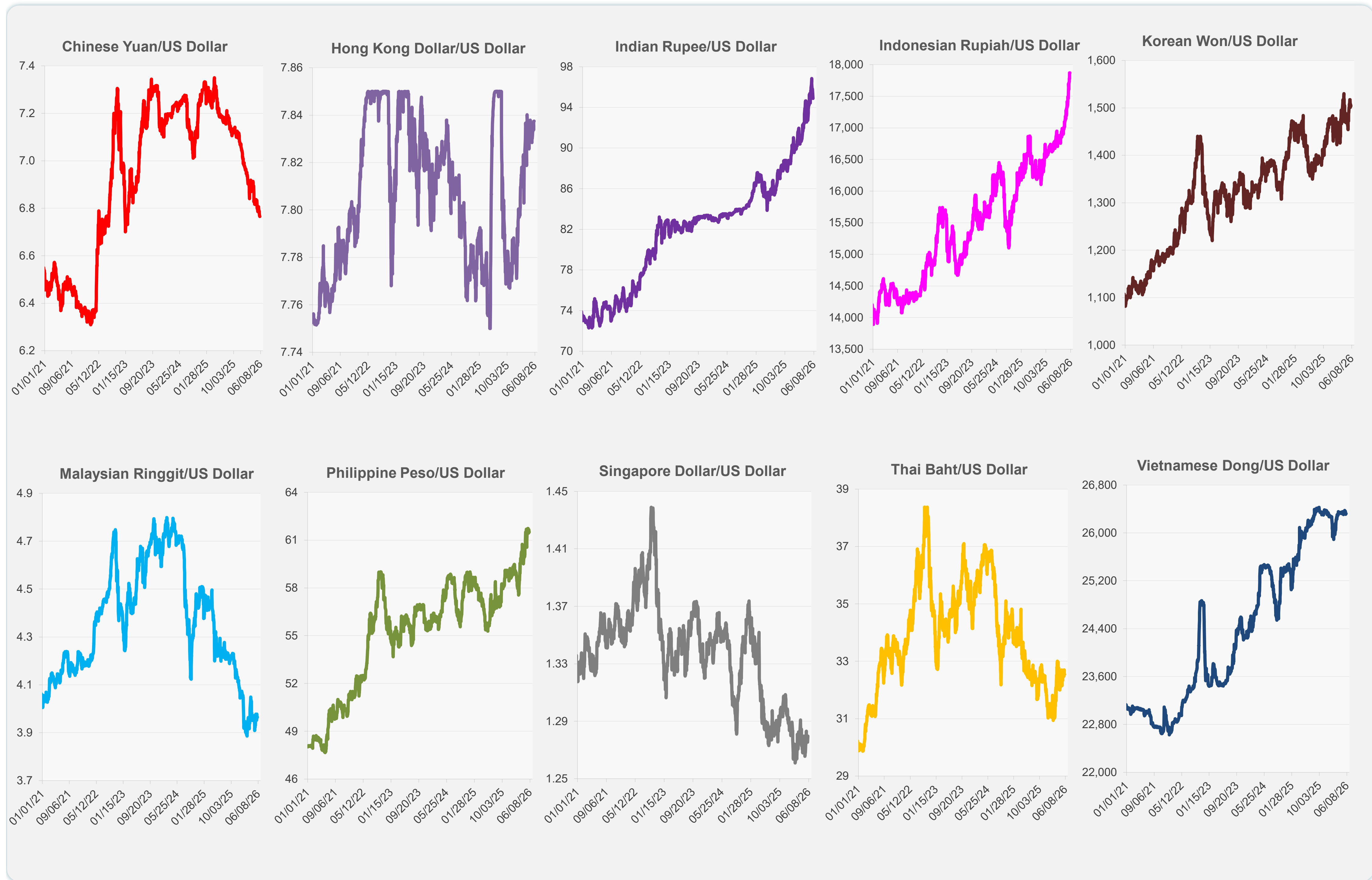
	Latest Closing	% change from Previous Day	% change from 01-Jan-26
Euro	0.86	-0.45	-1.09
Japanese yen (JPY)	159.47	-0.13	-2.19
Bangladeshi taka (BDT)	122.75	0.24	-0.41
Brunei dollar (BND)	1.28	-0.17	0.48
Chinese yuan (CNY)	6.77	0.05	3.30
Hong Kong dollar (HKD)	7.84	0.00	-0.69
Indian rupee (INR)	94.89	0.52	-5.18
Indonesian rupiah (IDR)	17,870.00	0.00	-6.69
Korean won (KRW)	1,504.30	0.24	-4.34
Malaysian ringgit (MYR)	3.97	0.00	2.35
Pakistan rupee (PKR)	278.45	0.01	0.59
Philippine peso (PHP)	61.50	0.25	-4.38
Singapore dollar (SGD)	1.28	-0.34	0.50
Sri Lanka rupee (LKR)	330.88	-0.42	-6.43
Taipei,China NT dollar (TWD)	31.38	0.02	0.19
Thai baht (THB)	32.55	0.00	-3.20
Vietnamese dong (VND)	26,322.50	-0.04	-0.09



NIE = Newly Industrialized Economies



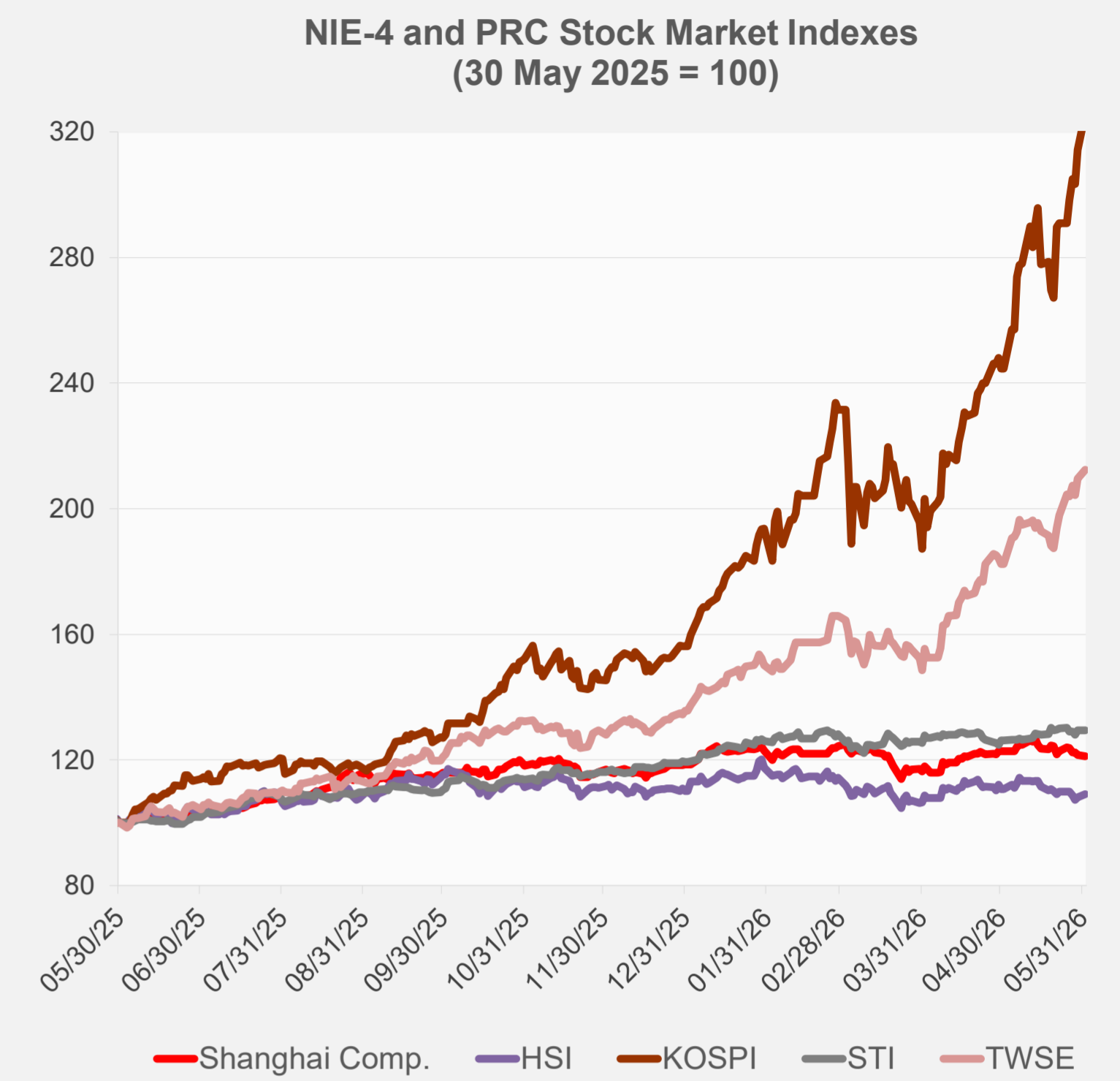
Note: Negative/Decreasing values indicate depreciation of local currency, and positive/increasing values indicate appreciation.  
Source: ADB calculations using data from Bloomberg and Haver Analytics.



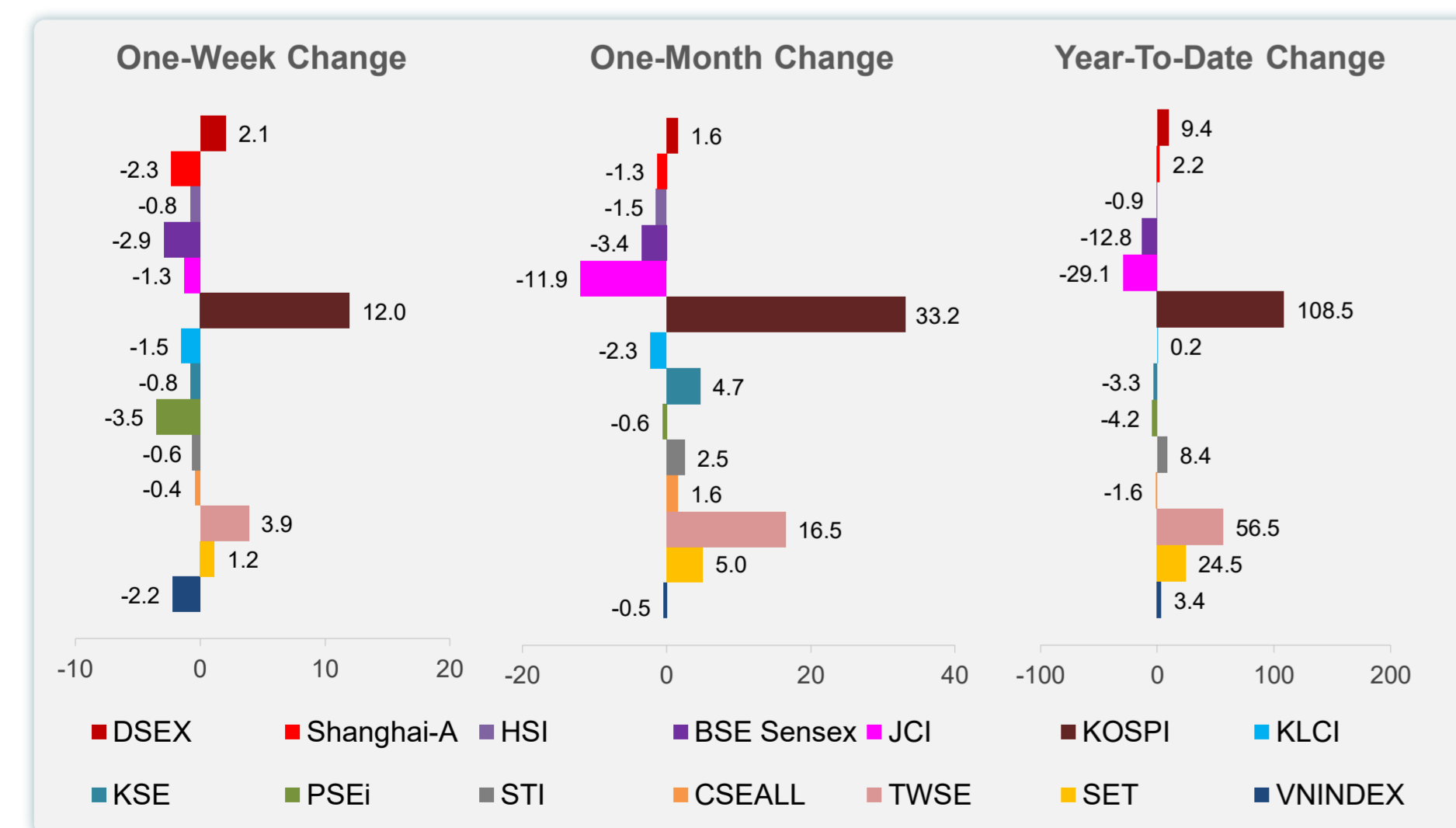
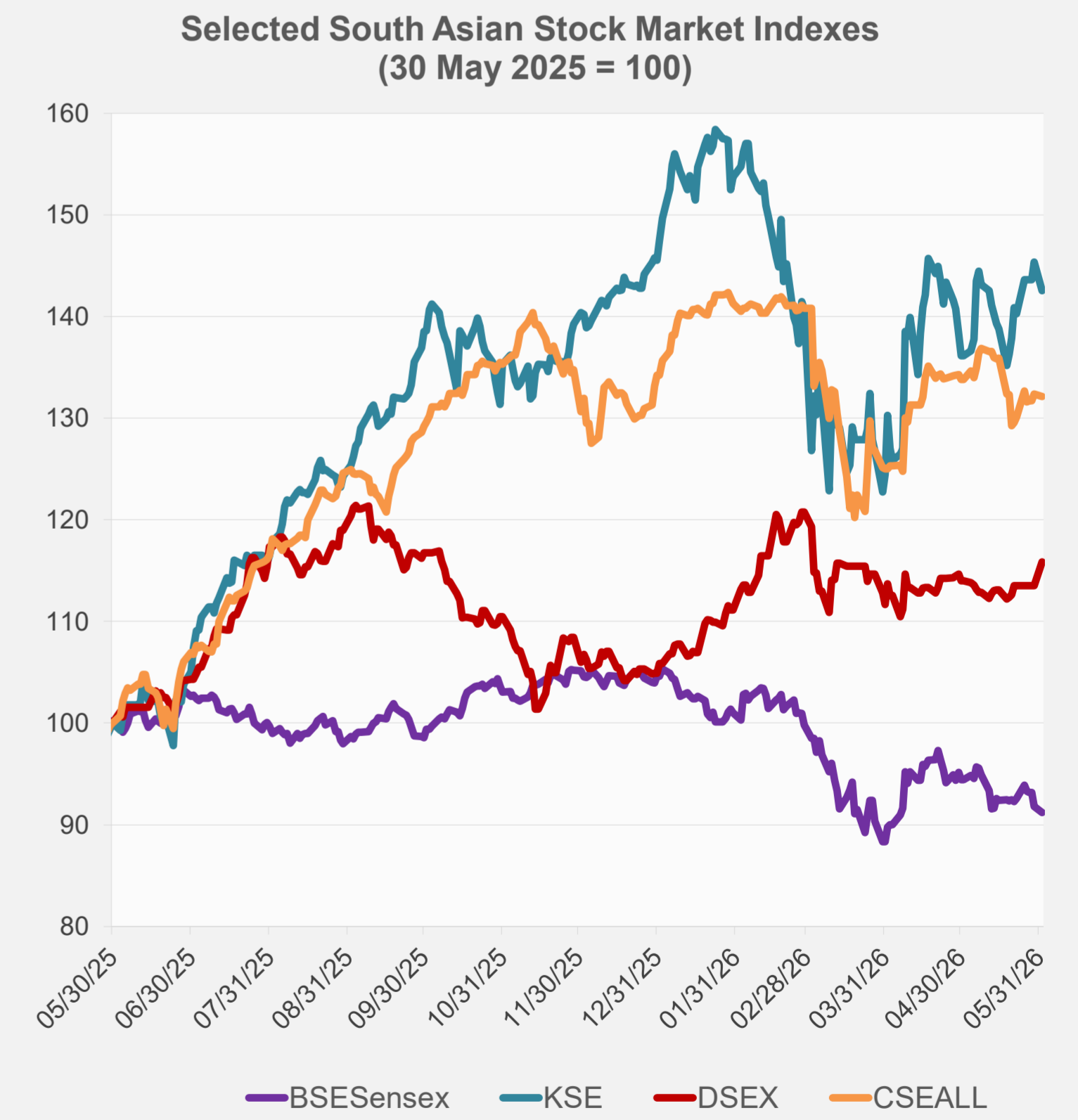
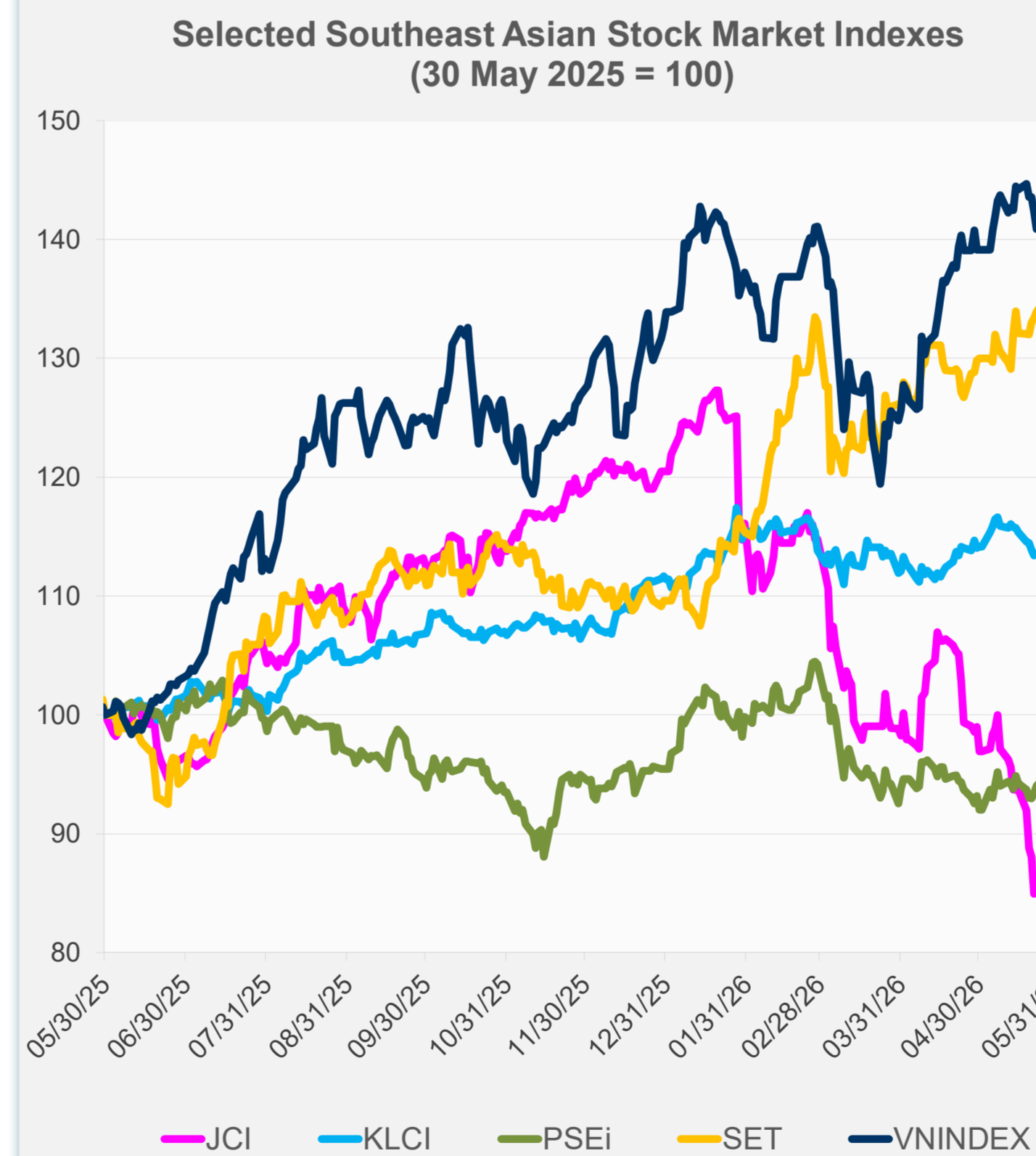
Source: Haver Analytics.

Daily Market Watch  
**STOCK INDEXES**

	Latest Closing	% change from Previous Day	% change from 01-Jan-26
US Dow Jones Ind Avg	51,078.88	0.09	6.27
US NASDAQ	27,086.81	0.42	16.54
US S&P 500	7,599.96	0.26	11.02
UK FTSE 100	13,703.96	0.30	21.69
EURO STOXX 50	6,034.95	-0.26	4.21
Japan NIKKEI 225	66,934.33	0.91	32.97
Bangladesh DSEX	5,372.63	2.06	9.41
PRC Shanghai Comp.	4,057.74	-0.27	2.24
Hong Kong, China HSI	25,398.18	0.86	-0.91
India BSE Sensex	74,267.34	-0.68	-12.82
Indonesia JCI	6,127.38	0.00	-29.14
Korea, Rep. of KOSPI	8,788.38	3.68	108.54
Malaysia KLCI	1,683.07	0.00	0.18
Pakistan KSE 100	170,612.30	-1.91	-3.32
Philippines PSEi	5,799.32	0.53	-4.19
Singapore STI	5,037.86	0.00	8.43
Sri Lanka CSEALL	22,265.04	-0.21	-1.59
Taipei, China TWSE	45,337.91	1.35	56.53
Thailand SET	1,568.37	0.00	24.51
Viet Nam VNINDEX	1,844.54	-1.02	3.37



NIE = Newly Industrialized Economies



Sources: ADB calculations using data from Bloomberg and CEIC Data Company.



Sources: ADB calculations using data from Bloomberg and CEIC Data Company.

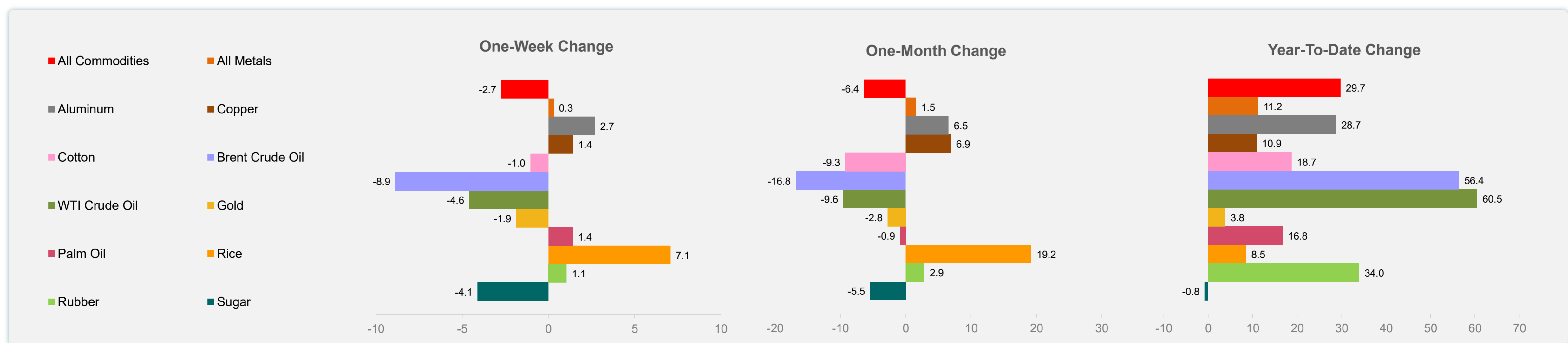
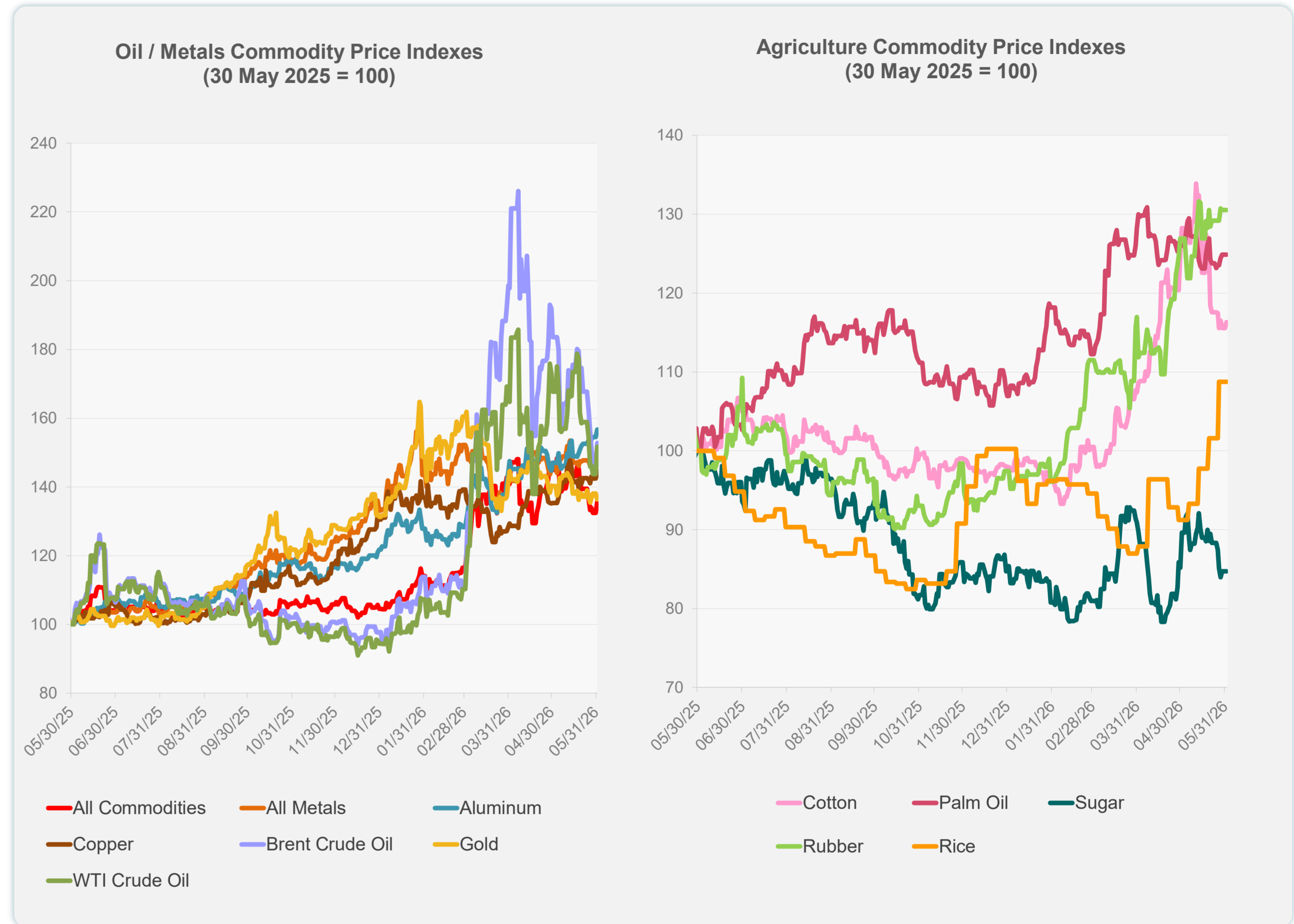
Daily Market Watch  
**COMMODITY PRICES**

2 June 2026, 9:00 AM Manila

	Unit	Latest Closing	% change from Previous Day	% change from 01-Jan-26
S&P All Commodities	US\$	711.69	2.46	29.75
S&P All Metals	US\$	493.56	-0.02	11.22
Aluminum	US\$/metric ton	3,820.56	1.40	28.73
Copper	US\$/metric ton	13,808.12	1.53	10.88
Cotton	US cents/lb	73.64	0.67	18.74
Brent Crude Oil	US\$/barrel	97.68	4.62	56.42
WTI Crude Oil	US\$/barrel	92.16	5.49	60.50
Gold	US\$/troy oz	4,484.98	-1.22	3.83
Palm Oil	US\$/metric tonne	1,130.91	0.00	16.75
Rice <sup>1</sup>	US\$/metric ton	484.00	0.00	8.52
Rubber <sup>2</sup>	US\$/kg	288.00	0.00	33.95
Sugar	US cents/lb	14.67	0.00	-0.81

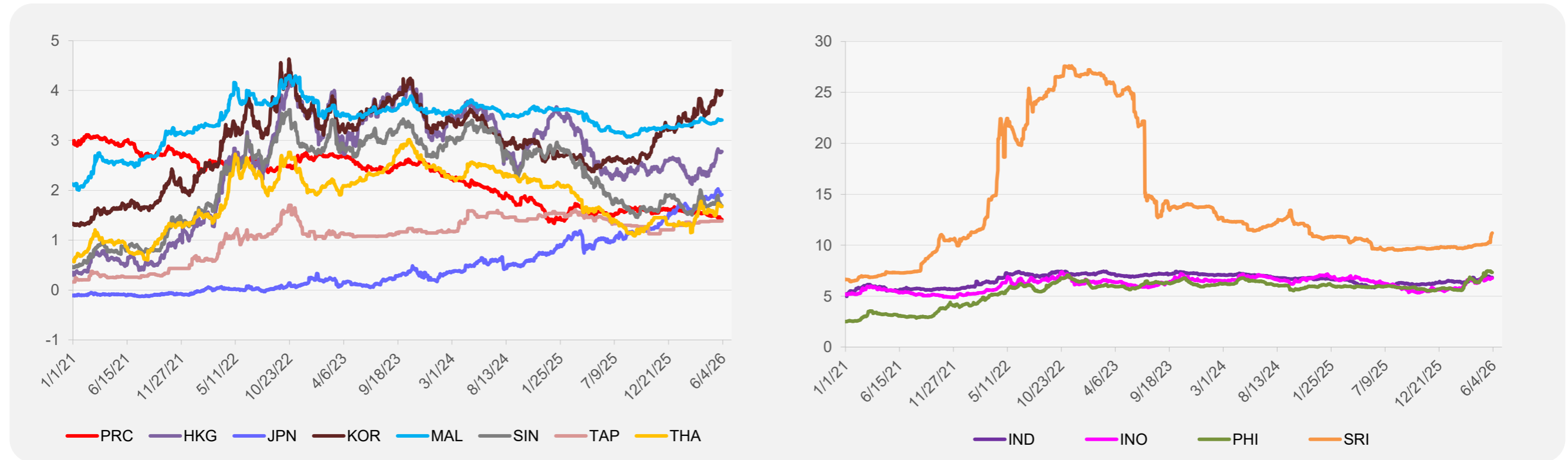
<sup>1</sup> Latest closing price from 27 May 2026.

<sup>2</sup> Singapore Exchange, Ribbed Smoked Sheet Rubber.

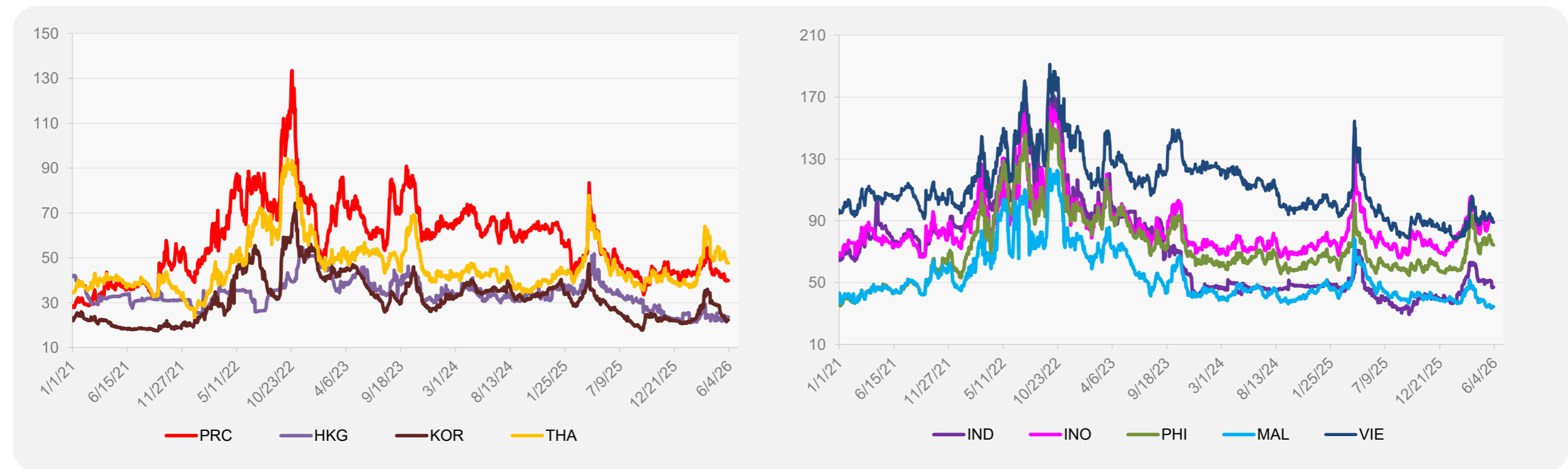


Source: ADB calculations using data from Bloomberg.

### 5-YEAR LOCAL CURRENCY GOVERNMENT BOND YIELDS (%)



### 5-YEAR CREDIT DEFAULT SWAP<sup>1</sup>



<sup>1</sup> In USD and based on sovereign bonds.  
Source: ADB calculations using data from Bloomberg.